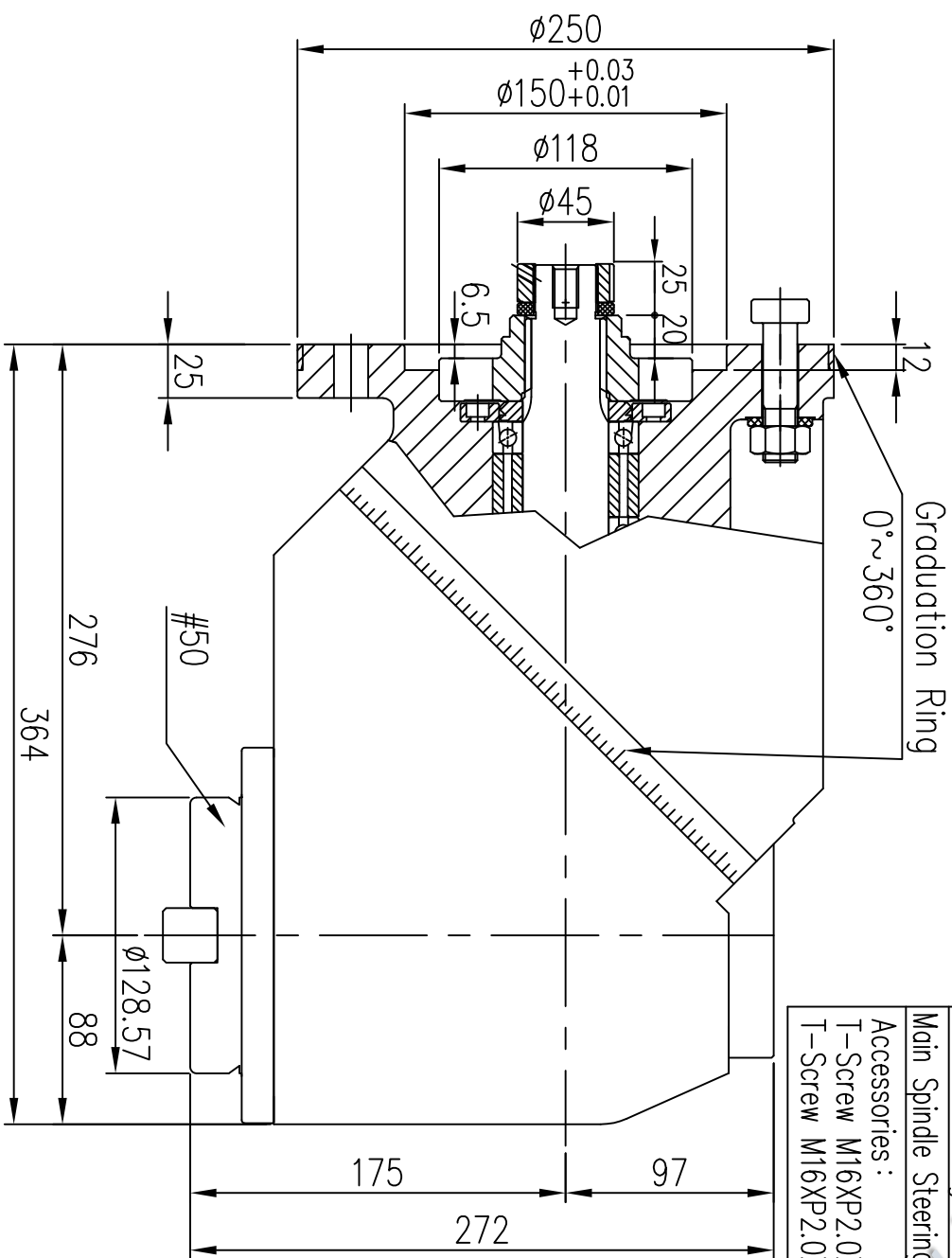
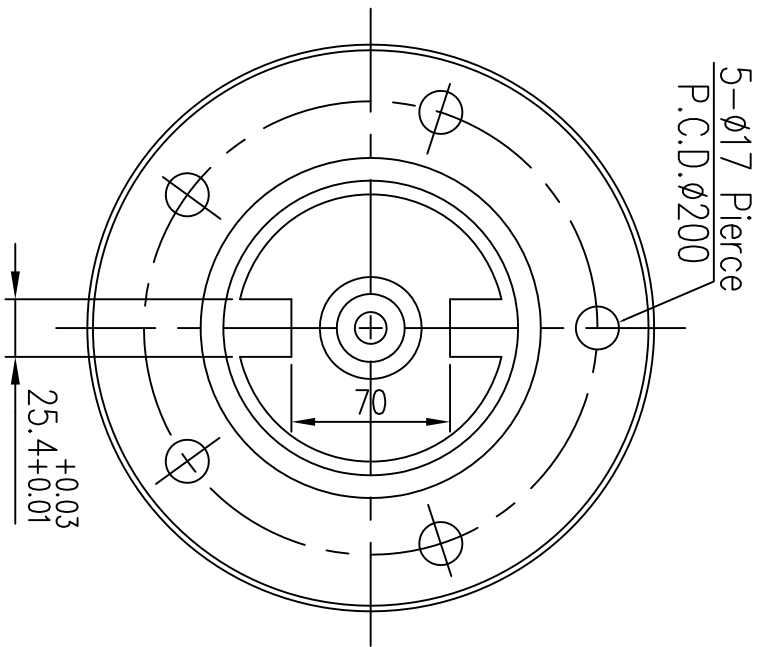


加工精度



C45N-01(E)

| | | | |
|------------------|-------------|-----------------------|------------|
| Pull Stud Select | BT(M24X3.0) | Max Cutter Dia | Ø150(6") |
| | NT(M24X3.0) | Reduction Ratio | 1 : 1 |
| | NT(1") | Max Torque | 1000N.m |
| | | Max Power | 38kw |
| | | Max Revolving | 2000rpm |
| | | Main Spindle Steering | Right Turn |

Accessories :
T-Screw M16XP2.0X67L X2
T-Screw M16XP2.0X76L X3